

15

BTO 1 V

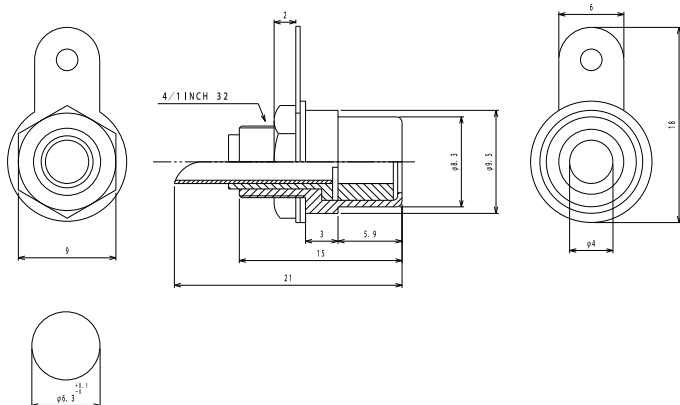
RCA connectors



RCA chassis socket acc. to JEITA RC-5231, with solder eyes,
for front side mounting

15

BTO 1 V



Environmental conditions

Temperature range -20 °C/+70 °C

Materials

Insulating body ABS, HB according to UL 94
Contact Cu alloy/steel, gold-plated
Hexagonal nut CuZn, nickel-plated
Washer steel, nickel-plated

Mechanical data

Mating cycles ≥ 500
Insertion force ≤ 30 N
Withdrawal force 3–30 N

Electrical data (at T_{amb} 20 °C)

Contact resistance ≤ 30 m Ω
Rated current 1 A
Rated voltage 12 V DC
Rated impulse voltage 250 V/60 s
Insulation resistance ≥ 100 M Ω

Associated products

Counterparts
[1570 01](#) [1573 01 V](#) [STO 1](#)
[STO 2](#) [XSTO 1](#)

15

BTO 1 V

Designation	Pole Number	PU (Pieces)	MDQ (Pieces)
BTO 1 V ROT (red)	2	200	400
BTO 1 V SCHWARZ (black)	2	200	400